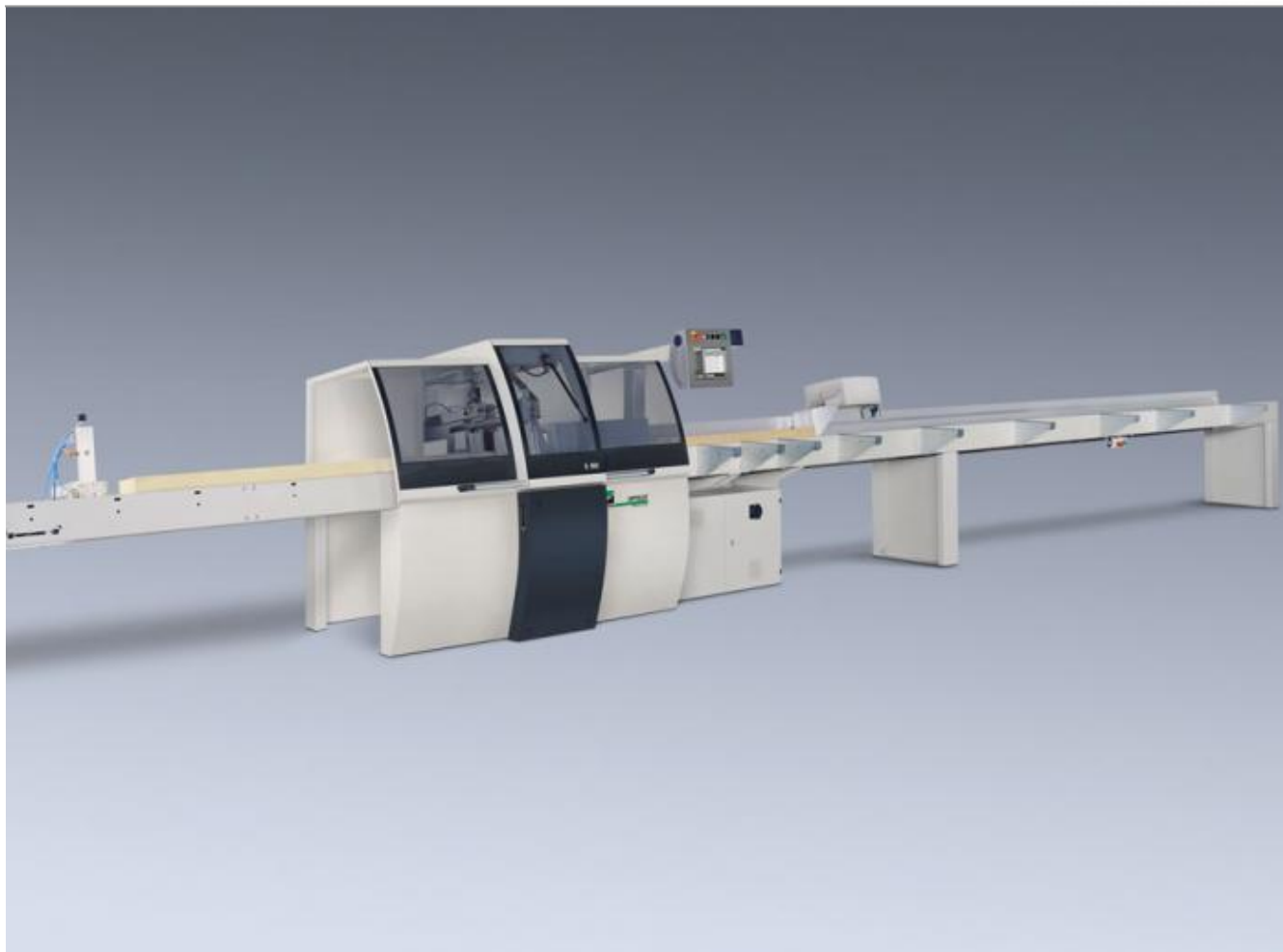


Weinig Opticut S90 Crosscut Saw-



With the OptiCut S90 there is no longer any reason to do without automatic length cutting. No adjusting or re-setting of fences. With the OptiCut S90, you can cut up to four times as much as with your manual crosscut saw - and with half the labour. You get a solid transport (with up to 120m/min), exact positioning (up to $\pm 0.1\text{mm}$), and safe clamping - even with heavy workpieces.

With the OptiCut S90 you work quite safely: because it is fully automatic, hands stay outside. Equipped with a maintenance free, completely closed pusher system, the saw's operation is easy: prepare your cutting list and get started.

Auckland

19 Allens Road, East Tamaki
Auckland 2013
Ph (09) 271 7700
Fax (09) 271 7728

Christchurch

159 Ferry Road, Waltham
Christchurch 8011
Ph (03) 366 2013
Fax (03) 366 2021

Call free: 0800 522 577

Copyright © 2025 W & R Jack Limited.



Weinig Opticut S90 Crosscut Saw-



Optimise your profits

The S90 cuts according to the pre-set order or optimises, i.e. it combines the lengths from a cutting list so that the least possible waste is created. Cutting out defects is also possible.

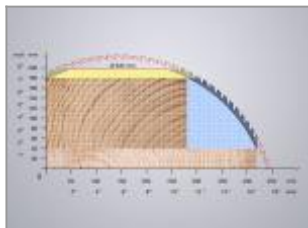
You can stay flexible with the OptiCut: if between times you want to quickly cut individual parts, just choose "manual cutting." The biggest advantage in comparison to a high capacity: if you want to cut packages or profiled pieces, single slats or even dowels, it can all be done easily on the OptiCut S90.

There are several models available.



S90 Speed

Power, performance and speed: this machine will impress you with its surprisingly high capacity which until now has only been possible on a through-feed saw. The speed of the whole system, consisting of the backstroke, the in-feed, clamping and cut, sets new standards for push-feed saws, without cutting back on flexibility, accuracy or material protection.



S90 XL

Pure power for bigger demands. This powerful model of the OptiCut S90 series can handle cross sections of up to 280 x 180mm and 420 x 40mm and a max. weight of 150kg for the workpiece.

This machine was mainly designed to achieve large production capacities cutting the workpieces in packages.

Overview and features

Auckland

19 Allens Road, East Tamaki
Auckland 2013
Ph (09) 271 7700
Fax (09) 271 7728

Christchurch

159 Ferry Road, Waltham
Christchurch 8011
Ph (03) 366 2013
Fax (03) 366 2021

Call free: 0800 522 577

Copyright © 2025 W & R Jack Limited.



Weinig Opticut S90 Crosscut Saw-



Specifications

Feed speed	up to 120m/min
Cutting capacity	300 x 100mm / 235 x 120mm
Maximum workpiece length	6.3m
Saw blade Ø	500mm
Maximum cutting height	100mm
Maximum cutting width	300mm
Motor	7.5kW (10hp)
Working height	1000mm
Weight	1650kg
Air consumption	225NL/min
Noise level	85dB (idling speed)

Specs shown are for a standard model, but Weinig offer a wide variety of options, so talk to us about customising a machine to suit you.

Specifications are subject to change without notice.

Auckland
19 Allens Road, East Tamaki
Auckland 2013
Ph (09) 271 7700
Fax (09) 271 7728

Christchurch
159 Ferry Road, Waltham
Christchurch 8011
Ph (03) 366 2013
Fax (03) 366 2021

Call free: 0800 522 577
Copyright © 2025 W & R Jack Limited.

